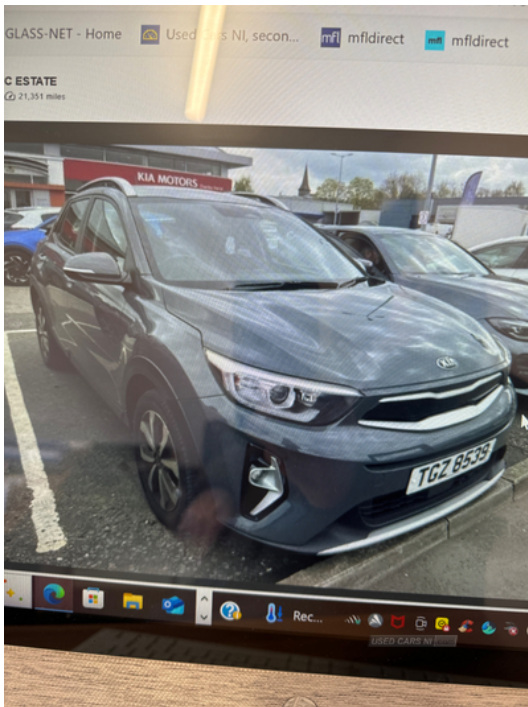


Kia Stonic 1.0T GDi 99 2 5dr | 2021
FSH, BLUETOOTH

£12,495



due in

Vehicle Features

4.2" supervision colour cluster display, 8" Touchscreen display with DAB radio, 12V power point front, 16" alloy wheels, 60/40 split folding rear seat, ABS with Electronic Brakeforce Distribution (EBD) & Brake Assist System (BAS), Aero blade type windshield wipers, Air conditioning, Air filter, Alarm system, All-round height adjustable headrests, All round 3-point seatbelts, All round electric windows with drivers auto up/down function, Android auto with voice control, Apple car play with voice control, Audio system with 6 speakers, Automatic headlights control, Bi-function projection headlights with static bending, Black/body colour bumpers, Black side sill, Bluetooth with music streaming, Body coloured door mirrors with matt black lower housing, Body coloured exterior door handles, Body coloured rear spoiler with high mounted braking light, Centre armrest storage box, Centre console with cupholders, Cloth upholstery, Cruise control + speed limiter, Dash illumination dimmer switch, Door deadlocks, door garnish and wheel arch trims, Driver's seat height adjuster, Driver attention warning (DAW) and High beam assist (HBA), Electrically adjustable/heated/folding door mirrors with LED indicators, Electric power steering, Electronic stability control and vehicle stability management, Emergency stop signalling system, Engine immobiliser, External temperature display, Forward Collision-Avoidance Assist (FCA) - City/Pedestrian/Cyclist, Front and centre cabin lights, Front and rear door map pockets with bottle holder, Front and rear silver skid plates, Front fog lights, Front passenger airbag cut-off

Miles:	21350
Fuel Type:	Petrol
Transmission:	Manual
Colour:	Grey
Engine Size:	998
Tax Band:	Petrol/Diesel (£190 p/a)
Body Style:	Sport utility vehicle
Insurance group:	9E
Reg:	TGZ8539

Technical Specs

DIMENSIONS	
Length:	4140mm
Width:	1760mm
Height:	1485mm
Seats:	5
Luggage Capacity (Seats Up):	352L
Gross Weight:	1650KG
Max. Loading Weight:	455KG
PERFORMANCE & ECONOMY	
Fuel Consum. (Combined):	51.4MPG
Fuel Tank Capacity:	45L
Number Of Gears:	6 SPEED
Top Speed:	115MPH
Acceleration 0-100 km/h:	10.7s
Engine Power BHP:	99.2BHP

switch, Front seatbelt pretensioners + load limiters, Front USB port, Gear shift indicator, Glovebox illumination, Headlight levelling device, Heated rear window, Height adjustable front seatbelts, High gloss black and satin radiator grille, Hill start assist control (HAC), Impact sensing auto door unlocking, Intelligent Stop and Go, ISOFIX Child seat top tethers and anchor fixings outer rear seats, Lane keeping assist system (LKAS), Leather trimmed gearshift, Leather trimmed steering wheel, LED daytime running lights, LED position light, Locking wheel nuts, Luggage area light, Luggage area parcel shelf, Luggage net hooks, Overhead console lamp, Overhead console with sunglasses cases, Passenger front seatback pockets, Rear combination lights, Rear fog lights, Rear parking sensor, Rear seat Occupancy alert, Rear USB port, Rear wash/wipe, Remote central door locking with fold away key, Roof rails, Seatbelt reminder warning, Silver interior door handles, Speed sensitive auto door locking, Speed variable front wipers, Steering wheel mounted controls, Sunvisors with vanity mirror illumination (Driver and front passenger), Tilt/telescopic adjust steering wheel, Tinted glass, Trip computer, Twin Curtain Airbags, Twin front airbags, Twin front side airbags, Tyre mobility kit, Tyre pressure monitoring system, Visible vehicle identification number, Welcome and follow-me home light functionality, Windscreen Washer Level Warning