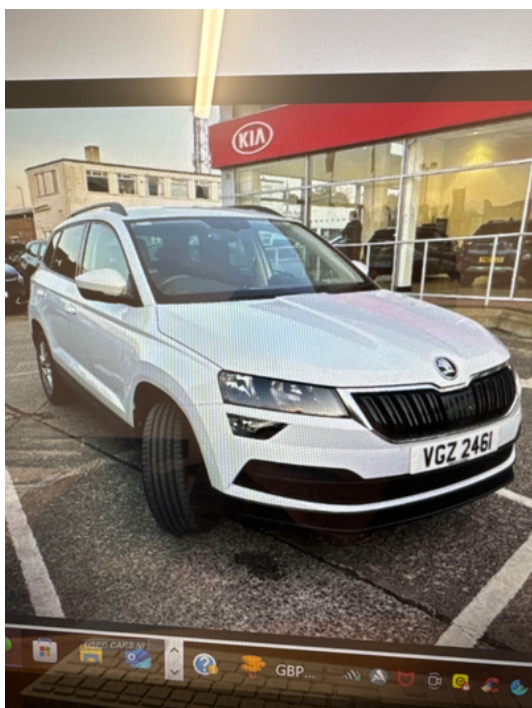


**Skoda Karoq 1.0 TSI 110 SE 5dr | 2021  
FSH, BLUETOOTH****£15,495**

DUE IN SOON

**Vehicle Features**

1.5 litre bottle holders in driver and front passenger door panels, 2 Folding hooks and nets in boot, 2 Front readings lights for driver and passenger, 3 rear height adjustable headrests, 4 foldable roof handles with rear coat hooks, 12V socket in boot, 12v socket in front centre armrest with storage compartment and rear air vents, Acoustic glass, Aero front windscreen wipers with intermittent function, Airbags - Front side, Alarm with interior monitoring, ASR, Automatic door unlocking in case of crash, Automatic fuel cut off in case of crash, Automatic headlight control system, back up horn and tilt sensor with safe function, Black electric window control buttons, Body colour door mirrors and handles, Body coloured bumpers, Care connect, Cargo elements in boot, Chrome framed air vents, Chrome inner door handles, DAB radio with Bluetooth, Driver airbag, Driver and passenger seats height adjust, Driver fatigue sensor, DSR, EDS, Electrically adjustable heated folding and auto dimming door mirrors, Electric front and rear windows with child proof lock, Electro-mechanical PAS, Electronic engine immobiliser, Electronic parking brake with auto hold function, Emergency rear braking signal, ESC including ABS, Folding tables on the front seat backrests, Front assist radar scanning of the space in front of the car with automatic braking, Front head restraints, Full height hardboard side lining, HBA, head, Heated rear windscreen, Height/reach adjust steering wheel, Height adjustable front three point seats belts with tensioners, Hill hold control, Ice scraper, Illuminated and cooled glovebox,

<b>Miles:</b>	18900
<b>Fuel Type:</b>	Petrol
<b>Transmission:</b>	Manual
<b>Colour:</b>	White
<b>Engine Size:</b>	999
<b>Tax Band:</b>	Petrol/Diesel (£190 p/a)
<b>Body Style:</b>	Estate
<b>Insurance group:</b>	11E
<b>Reg:</b>	VGZ2461

**Technical Specs**

DIMENSIONS	
<b>Length:</b>	4382mm
<b>Width:</b>	1841mm
<b>Height:</b>	1603mm
<b>Seats:</b>	5
<b>Luggage Capacity (Seats Up):</b>	521L
<b>Gross Weight:</b>	1890KG
<b>Max. Loading Weight:</b>	606KG
PERFORMANCE & ECONOMY	
<b>Fuel Consum. (Urban Cold):</b>	43.5MPG
<b>Fuel Consum. (Extra Urban):</b>	64.2MPG
<b>Fuel Consum. (Combined):</b>	54.3MPG
<b>Fuel Tank Capacity:</b>	50.8L
<b>Number Of Gears:</b>	6 SPEED
<b>Top Speed:</b>	117MPH
<b>Acceleration 0-100 km/h:</b>	11.1s
<b>Engine Power BHP:</b>	108.6BHP

Illuminated luggage compartment, Isofix child seat preparation  
outer rear, knee and curtain, LED rear lights with high  
functionality, Light assistant (coming/leaving home/tunnel light),  
Manual lumbar support for front seats, MKB and traction control,  
MSR, Net programme in boot, Outside temperature gauge,  
Passenger airbag with switch-off function, Pedestrian monitor,  
Pen holder, Pollen filter, Privacy glass, RBS, Rear boot cover,  
Rear reading lights, Remote central locking with 2 remote folding  
keys, Safety reflectors on front doors, Safety vest holder,  
Seatbelt reminder signalisation and pretensioner for all seats,  
Service interval indicator, SmartLink wireless for Apple and wired  
for Android, Start/stop system with regenerative braking,  
Storage box in upper central dashboard closed, Storage on  
wheel cover, Sunvisors with illuminated vanity mirrors, Three  
point seatbelts rear, Two tone horn, Tyre pressure display, Tyre  
pressure monitor, Umbrella under passenger seat, USB  
connection, USB C Port x 2 in front centre console