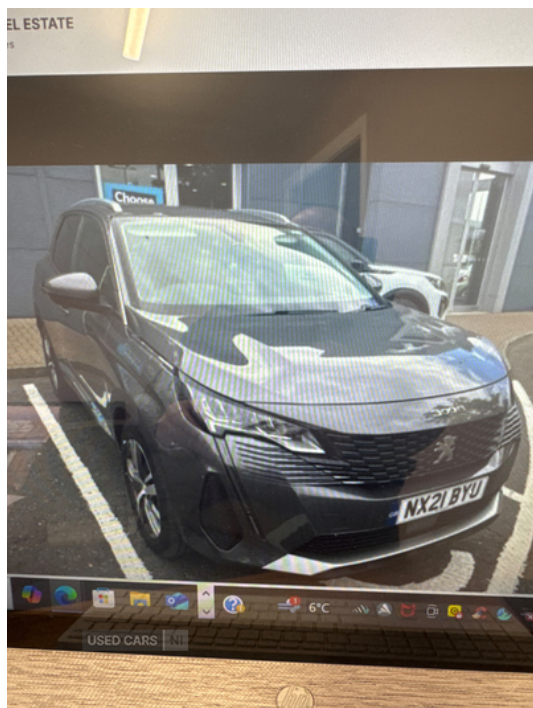


**Peugeot 3008 1.5 BlueHDi Allure Premium 5dr
| 2021****£16,495****SATNAV, BLUETOOTH, FSH**

Just arrived

Vehicle Features

1/3 to 2/3 split folding rear seats, 2 cupholders in front centre console, 2x Rear coat hooks, 3D connected navigation with 10" HD touchscreen + voice recognition system, 3x Front optimised safety headrests and rear retractable headrests with height adjustable, 3x Isofix child seat fittings in the front passenger and outer rear seats, 3x Rear three-point retractable seatbelts with force limiters in the outer rear seats, 4 Grab handles retractable and damped, 6 speakers radio with mp3 compatible, 12V Sockets in dashboard, ABS (Anti-lock Braking System) with EBD (Electronic Braking Distribution) and EBA (Emergency Braking Assistance), Adaptive driver and front passenger airbags with passenger airbag deactivation function, Aluminium longitudinal roof bars, apple carplay and andriod auto, Automatic door locking when moving off, Automatic hazard light activation upon heavy brake application, Automatic triggered rear windscreen wiper in reverse gear, Black rubber side window trim, Blue ambient lighting for connecting zone, Blue ambient lighting to front door panels, Bluetooth telephone facility, Body colour door handles, Body colour door mirror shells, Body colour rear roof spoiler with stainless steel edging trim, Body protectors (bottom of front and rear bumpers + wheel arches + protection at bottom of doors) in black, Brumeo fabric Dashboard, Brumeo fabric trimmed door armrests, central storage and cupholders, Centre front armrest with butterfly wing opening and illuminated storage compartment, Chrome front wing trim, Chrome rear

Miles:	30800
Fuel Type:	Diesel
Transmission:	Manual
Colour:	Grey
Engine Size:	1500
Tax Band:	Petrol/Diesel (£190 p/a)
Body Style:	Sport utility vehicle
Insurance group:	21E
Reg:	NX21BYU

Technical Specs

DIMENSIONS	
Length:	4447mm
Width:	1841mm
Height:	1620mm
Seats:	5
Luggage Capacity (Seats Up):	520L
Gross Weight:	1980KG
Max. Loading Weight:	551KG

PERFORMANCE & ECONOMY

Fuel Consum. (Combined):	61.4MPG
Fuel Tank Capacity:	53L
Number Of Gears:	6 SPEED
Top Speed:	119MPH
Acceleration 0-100 km/h:	10.8s
Engine Power BHP:	128.7BHP

bumper fascia, DAB Digital radio, Dark tinted rear side windows + tailgate window, Driver and front passenger side airbag, Driver attention alert system, Dual zone automatic climate control, Dynamic stability control and electronic anti-skid system, Eco LED headlights, Electric child locking functionality on rear windows and doors, Electric folding door mirrors, Electric operated/heated door mirrors, Electric parking brake, Electric power steering with reach and rake adjustable steering column, Electronic immobiliser, Extended Traffic sign recognition, Exterior temperature indicator with ice warning, Flocked glovebox interior, Foldable front passenger seat, Footwell illumination, Front and rear curtain airbags, Front and rear door and sill protectors with polished stainless steel insert, front and rear door panel finish, Front interior light with 2 reading spotlights and rear interior light with timer, Front parking sensors, Front seat back map pockets, Front three point retractable seatbelts with pre tensioners and force limiters, Front ventilated disc brakes and rear disc brakes, Front windscreen wiper with magic wash cleaning system, Gear shift indicator, Gloss black B and C pillar and aerodynamic deflector trim, Gloss black front bumper air scoops, Gloss black rear cluster connecting strip, Headlights left on audible warning, Heated rear windscreen with integrated antenna, Height adjustable front seats, Hill start assist, Illuminated glovebox, Individual left and right controls in boot for seat folding, key operated exterior door lock from the left hand door, Lane departure warning system, Leather steering wheel with detail stitch, LED daytime running lights, LED interior lighting in storage spaces and load area, LED rear number plate lighting, LED side indicator lights integrated into door mirrors, LED third brake light, Mirror screen with mirror link, Multi function trip computer, One touch electric front/rear windows with pinch protection, Passive blind spot monitoring without Steering correction, Perimetric and volumetric alarm with lift and tilt sensor, Peugeot connect SOS and assistance, PEUGEOT i-Cockpit with 8.0" capacitive touchscreen in centre console, Peugeot i-cockpit with compact multi-function sports steering wheel, PEUGEOT i-Cockpit with configurable 12.3" Head-up digital instrument panel, Peugeot Open and Go System, Programmable cruise control and speed limiter, Puncture repair kit including compressor, Radiator grille in chrome edge trim and facets, Rear bench seat with central armrest and ski hatch, rear cabin and load area, Rear centre console ventilation system, Rear LED Peugeot signature 'Claw Effect' lights, Rear parking aid, Rear side wing doors, Remote control central locking with two plip keys, Roof lining - Salin light grey, Safety pack with emergency braking system - 3008, Safety plus pack with high beam assist - 3008, Satin chrome dashboard trim, Satin chrome digital instrument panel and touchscreen trim, Satin chrome front door panel recess trim, Satin chrome interior door handles, Satin chrome scorpion's tail and toggle switch trim, sealant cartridge and towing eye, Seatbelt not fastened audible and visual alert for front seats, Seatbelt unfastened on the move audible and visual alert for front and rear seats, Speed limit recognition and recommendation, Stainless steel roof arches,

Stop/start function, Sunvisors with illuminated vanity mirrors,
Two position boot floor, Two tone horn, USB socket, Visibility
pack - 3008